

User's Guide

MobileCollect Selection Tool

MICRORIDGE

*Measurement Collection Technology
For Today & Tomorrow!*

www.microridge.com

MobileCollect Selection Tool

Copyright © 2011-2012 MicroRidge Systems, Inc.

All rights reserved. No parts of this work may be reproduced in any form or by any means - graphic, electronic, or mechanical, including photocopying, recording, taping, or information storage and retrieval systems - without the written permission of the publisher.

Products that are referred to in this document may be either trademarks and/or registered trademarks of the respective owners. The publisher and the author make no claim to these trademarks.

While every precaution has been taken in the preparation of this document, the publisher and the author assume no responsibility for errors or omissions, or for damages resulting from the use of information contained in this document or from the use of programs and source code that may accompany it. In no event shall the publisher and the author be liable for any loss of profit or any other commercial damage caused or alleged to have been caused directly or indirectly by this document.

Printed: Monday, January 09, 2012 at 1:53 PM in Sunriver, Oregon.

Table of Contents

Chapter 1 Introduction	1
Chapter 2 Cable Lengths	2
Chapter 3 Gage & Price Updates	3
Chapter 4 Selection Tool Operation	4
Selection Tool Tabs.....	4
Cables & Mobile Modules	5
RS-232 Remotes	6
Bases	7
Summary	8
Printed Summary.....	9
Chapter 5 Command Mobile Module	10
Chapter 6 Purchase Orders	11
Chapter 7 Warranty Information	12
Chapter 8 Contact MicroRidge	13

1 Introduction

There are hundreds of gages that are supported by MobileCollect. With the MobileCollect Selection Tool you can quickly determine the gage cable and Mobile Module required for your gage. All you need is the gage manufacturer and the gage model number (gage code for Mitutoyo).

When you configure a MobileCollect wireless system, you can specify the following:

- Gage cables for connecting your gages to Mobile Modules.
- Type of Mobile Module (Digital or RS-232) required for each gage.
- Number of Remotes required. Remotes are optional and may not be required for your configuration.
- Number and type of Bases (USB or RS-232) required. You will need a Base for each PC that will be receiving wireless measurements
- Accessories such as Serial to USB cables.

The most difficult task in this configuration process can be determining the gage cables and Mobile Modules required for your gages. The MobileCollect Selection Tool allows you to enter the gage models (gage code for Mitutoyo gages) and will show you the gage cables and Mobile Modules required for your gages. The MobileCollect Selection Tool contains information for over 1,000 gage models and allows you to quickly configure a MobileCollect system.

Using the MobileCollect Selection Tool

- Select the gage manufacture from the list of supported manufactures. Additional gage manufacturers will be added in the future.
- Search for the gage using the model/code number and/or gage type.
- When a selected gage is added to the selected gage list, the type of Mobile Module will automatically be identified.
- Specify the number of gage cables required for a gage model. The total price of the gage cables, number of Mobile Modules and total price of the Mobile Modules will automatically be displayed.
- Specify the number of Remotes required, and the total prices will automatically be displayed. Remotes are optional and may not be required for your configuration.
- Specify the number and type of Bases required, and the total prices will automatically be displayed. A Base is required for each PC that will be receiving wireless measurements.
- Print a summary report showing all of the items selected. This report shows individual and total prices.
- Save the configuration to a file for later retrieval.

2 Cable Lengths

The cable lengths displayed in the MobileCollect Selection Tool are the default length used with each gage model. If you do not specify a cable length at the time of order, the default cable length will be shipped. The standard cable lengths are as follows:

Length	Typical Usage
3.5"	Standard for calipers
6.5"	Most micrometers & indicators
9"	Available by special request
12"	Available by special request
18"	Available by special request
24"	Available by special request

3 Gage & Price Updates

Since supported gages and pricing are subject to change, be sure you have the current version of the MobileCollect Selection Tool. Check the [MobileCollect Selection Tool download page](#) to verify that you have the latest version. To update the Selection Tool on your PC, you must download the .msi installation file and then run the .msi file to install the updated Installation Tool. The MobileCollect Selection tool has been tested on Windows XP and Windows 7.

4 Selection Tool Operation

The MobileCollect Selection Tool has been tested on Windows XP and Windows 7. There is an acceptable minimum screen resolution and font size required by the program. If the main program window does not fit on your screen, try reducing the default screen font size. If reducing the font size does not fix the problem, you will need to use a monitor with a higher resolution. The minimum resolutions that have been tested with the program are 1280 x 800 and 1366 x 768.

The MobileCollect Selection Tool can be installed on multiple computers as required to support your sales and quoting efforts. The operation of the Selection Tool is very straight forward. After you install the program, work with it for a few minutes and you should quickly become proficient with the operation of the Selection Tool.

4.1 Selection Tool Tabs

The MobileCollect Selection Tool uses 4 tabs to access the features of the program. Start with the first tab (Cables & Mobile Modules), select the gages you will be using and then proceed to the next tab. The last tab (Summary) will show the results of all of the selected items.

4.1.1 Cables & Mobile Modules

MobileCollect Selection Tool - Untitled (New File)

File Help

Cables & Mobile Modules | RS-232 Remotes | Bases | Summary

Gage manufacturer:
 Brown & Sharpe
 Chatillon
 Chicago Dial
 Component Engineering
 Dillon
 FlexBar
 Fowler
 LMI
 Mahr Federal
 Mecmessin
 Mitutoyo

Cable search for Mitutoyo gages (file version 1-3-2012):
 Gage code: 500- Gage type: Clear Show all gages
 You must enter at least 3 character for a gage search

	Gage Code	Gage Type	MicroRidge Part Number	Cable Length	List Price	Comments
1	500-150	Caliper	MC-D-959149-X	3.50	99.00	
2	500-151	Caliper	MC-D-959149-X	3.50	99.00	
3	500-152	Caliper	MC-D-959149-X	3.50	99.00	

Double-click row or click Select button to add gage & gage cable to grid below Number of gages in list = 106

Important information:
 Revised: 1-9-2012
 Sales phone: 541-593-3500
 Prices subject to change without notice.
 Check the Selection Tool Updates to be sure you have the latest pricing and gage information.
[Selection Tool Updates](#)
www.microridge.com
sales@microridge.com

Mobile Modules & Cables for selected gages:

	Quantity	Gage Manufacturer	Gage Model	Module/Gage Type	MicroRidge Part Number	Cable Length	Required Module	List Price	Total Price
1	5	--	--	Digital	MC-MM-D	--	--	249.00	1,245.00
2		--	--	RS-232	MC-MM-V2	--	--	349.00	
3		--	--	Command	MC-MM-DC	--	--	349.00	See Help
4	2	FlexBar	18201	Caliper	MC-D-54-115-333-X	3.50	Digital	172.00	344.00
5	3	Mitutoyo	500-150	Caliper	MC-D-959149-X	3.50	Digital	99.00	297.00

Click the column titles to sort the items in the grid Number of gages selected = 2

Information about gages & cables:
 MobileCollect supports thousands of different gages. The information on this tab allows you to specify the gage cables required to connect your gages to Mobile Modules. The Mobile Module type and the cable length are automatically specified. If you need a different cable length or cannot find your gage, contact MicroRidge.

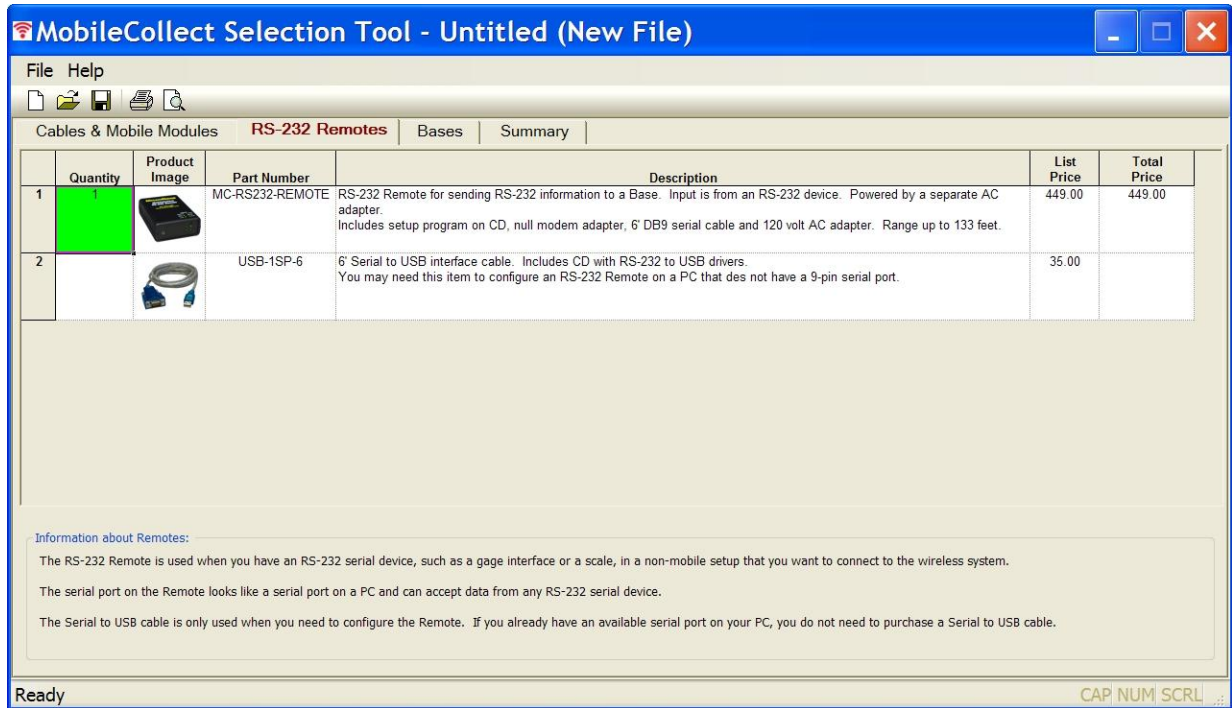
Ready CAP NUM SCRL

This tab is the starting point for using the MobileCollect Selection Tool. You will need to know the list of gage manufactures and gage models that you want to use with MobileCollect. If you are connecting Mitutoyo gages, use the gage code rather than the gage model.

Follow these steps to build the list of gage cables and Mobile Modules required for your application.

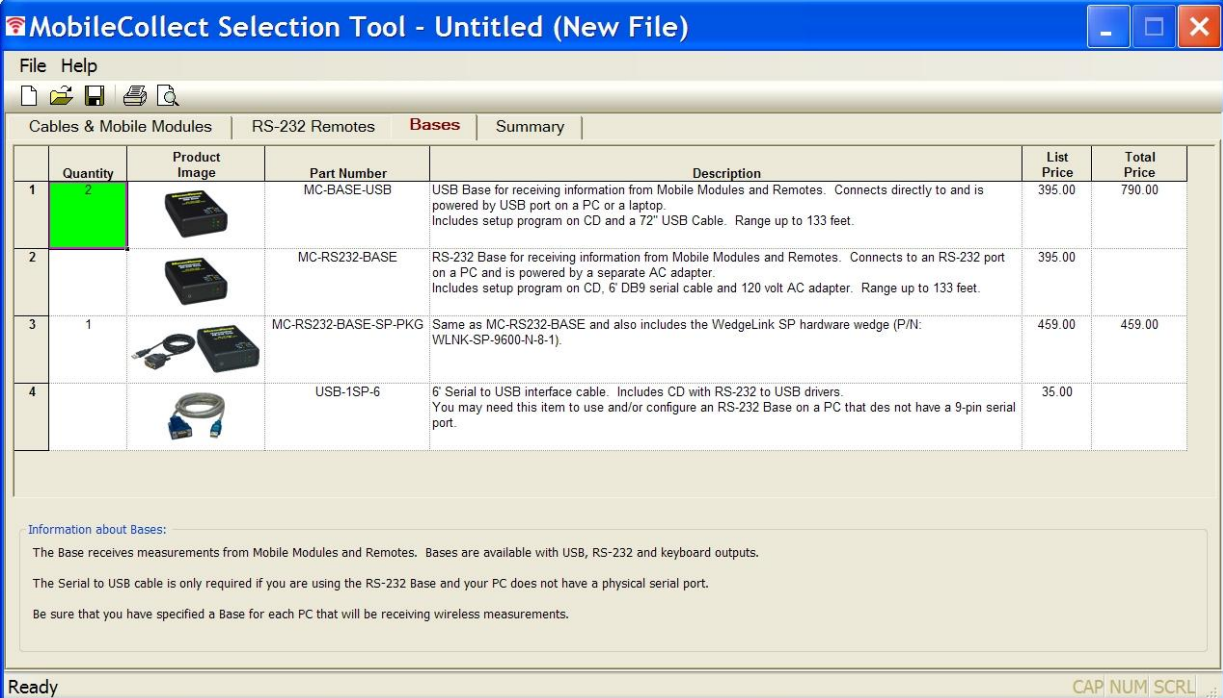
- Select the gage manufacturer. If the manufacturer is not Mitutoyo, the list of gages in the database will be displayed. If the manufacturer is Mitutoyo, you will need to enter information in the Gage code and/or Gage type fields. There are over 1,100 items in the Mitutoyo database and it is easier to zero in on the desired gage by entering the gage information.
- To add a gage to the Mobile Modules & Cables for selected gages grid, double-click the gage in the upper grid or select the gage and click the Select button.
- In the lower grid, modify the quantity fields as necessary. The Selection Tool will automatically update the number and type of Mobile Modules required.

4.1.2 RS-232 Remotes







If you need RS-232 Remotes for your application, specify the number required on this tab. The USB interface cable is only required if you need to configure the RS-232 Remote with a computer that does not have a serial port. The USB interface cable is not used to connect your serial device to the RS-232 Remote.

4.1.3 Bases



The screenshot shows the 'MobileCollect Selection Tool - Untitled (New File)' window. The 'Bases' tab is selected, displaying a table with the following data:

	Quantity	Product Image	Part Number	Description	List Price	Total Price
1	2		MC-BASE-USB	USB Base for receiving information from Mobile Modules and Remotes. Connects directly to and is powered by USB port on a PC or a laptop. Includes setup program on CD and a 72" USB Cable. Range up to 133 feet.	395.00	790.00
2			MC-RS232-BASE	RS-232 Base for receiving information from Mobile Modules and Remotes. Connects to an RS-232 port on a PC and is powered by a separate AC adapter. Includes setup program on CD, 6' DB9 serial cable and 120 volt AC adapter. Range up to 133 feet.	395.00	
3	1		MC-RS232-BASE-SP-PKG	Same as MC-RS232-BASE and also includes the WedgeLink SP hardware wedge (P/N: WLNK-SP-9600-N-8-1).	459.00	459.00
4			USB-1SP-6	6' Serial to USB interface cable. Includes CD with RS-232 to USB drivers. You may need this item to use and/or configure an RS-232 Base on a PC that does not have a 9-pin serial port.	35.00	

Information about Bases:
 The Base receives measurements from Mobile Modules and Remotes. Bases are available with USB, RS-232 and keyboard outputs.
 The Serial to USB cable is only required if you are using the RS-232 Base and your PC does not have a physical serial port.
 Be sure that you have specified a Base for each PC that will be receiving wireless measurements.

Bases are needed in order to receive measurement information from Mobile Modules and RS-232 Remotes. Bases are available with a 9-pin RS-232 connector or a USB connector. The USB Base requires the installation of a driver on your PC. Once the driver is installed and the Base is connected, the application software on the PC will communicate with the Base via a virtual RS-232 serial port.

If you want the Base output to appear as keyboard input to your application, use the MC-RS232-BASE-SP-PKG product. The USB interface cable is only required if you need to configure and/or use an RS-232 Base with a computer that does not have a serial port.

[Contact MicroRidge](#) if you have question about the Base selection process.

4.1.4 Summary

	Quantity	Product Image	Part Number	Description	List Price	Total Price
1	2		MC-D-54-115-333-X	Gage cable for Digital Mobile Module. Cable length = 3.50 inches. The gage selected for use with this cable is as follows: Gage brand = FlexBar. Gage type = Caliper. Gage model = 18201.	172.00	344.00
2	3		MC-D-959149-X	Gage cable for Digital Mobile Module. Cable length = 3.50 inches. The gage selected for use with this cable is as follows: Gage brand = Mitutoyo. Gage type = Caliper. Gage code = 500-150.	99.00	297.00
3	5		MC-MM-D	Digital Mobile Module used to capture measurements from digital and many RS-232 handheld gages. A gage cable is not included with the Mobile Module. You must order the appropriate gage cables separately.	249.00	1,245.00
4	1		MC-RS232-REMOTE	RS-232 Remote for sending RS-232 information to a Base. Input is from an RS-232 device. Powered by a separate AC adapter. Includes setup program on CD, null modem adapter, 6' DB9 serial cable and 120 volt AC adapter. Range up to 133 feet.	449.00	449.00
5	2		MC-BASE-USB	USB Base for receiving information from Mobile Modules and Remotes. Connects directly to and is powered by USB port on a PC or a laptop. Includes setup program on CD and a 72" USB Cable. Range up to 133 feet.	395.00	790.00
6	1		MC-RS232-BASE-SP-PKG	Same as MC-RS232-BASE and also includes the WedgeLink SP hardware wedge (P/N: WLNK-SP-9600-N-8-1).	459.00	459.00

Ready CAP NUM.SCR L

The Summary tab displays the results of the the gage cables, Remotes and Bases that have been selected. The Reference field in the upper left corner of the window allows you to enter a description (i.e., customer name, etc) for the currently selected items. You can also save a copy of the selection summary to a file.

4.2 Printed Summary

Page 1 of 1 1-9-2012
1:37:57 PM

MobileCollect Selection Tool
Databases revised January 9, 2012 (prices subject to change without notice)

Reference: *Ajax Wheel Bearings* Selection Total: **\$3,584.00**

	Quantity	Product Image	Part Number	Description	List Price	Total Price
1	2		MC-D-54-115-333-X	Gage cable for Digital Mobile Module. Cable length = 3.50 inches. The gage selected for use with this cable is as follows: Gage brand = FlexBar. Gage type = Caliper. Gage model = 18201.	172.00	344.00
2	3		MC-D-959149-X	Gage cable for Digital Mobile Module. Cable length = 3.50 inches. The gage selected for use with this cable is as follows: Gage brand = Mitutoyo. Gage type = Caliper. Gage code = 500-150.	99.00	297.00
3	5		MC-MM-D	Digital Mobile Module used to capture measurements from digital and many RS-232 handheld gages. A gage cable is not included with the Mobile Module. You must order the appropriate gage cables separately.	249.00	1,245.00
4	1		MC-RS232-REMOTE	RS-232 Remote for sending RS-232 information to a Base. Input is from an RS-232 device. Powered by a separate AC adapter. Includes setup program on CD, null modem adapter, 6' DB9 serial cable and 120 volt AC adapter. Range up to 133 feet.	449.00	449.00
5	2		MC-BASE-USB	USB Base for receiving information from Mobile Modules and Remotes. Connects directly to and is powered by USB port on a PC or a laptop. Includes setup program on CD and a 72" USB Cable. Range up to 133 feet.	395.00	790.00
6	1		MC-RS232-BASE-SP-PKG	Same as MC-RS232-BASE and also includes the WedgeLink SP hardware wedge (P/N: WLNK-SP-9600-N-8-1).	459.00	459.00

To order, transfer the items to your Purchase Order or attach the printout to your Purchase Order.
Version 1.0.16 -- Copyright © 2011-2012 MicroRidge Systems, Inc. -- 541-593-3500

A sample of a printed summary is shown above. Please refer to the [Purchase Orders](#) section for information about using this summary as part of a purchase order.

If you want to print this summary to a PDF file, you must have a PDF Writer installed on your computer.

5 Command Mobile Module

The Command Mobile Module (CMM) is a special version of the Digital Mobile Module (DMM) that allows you to send commands from a Base to the CMM. These commands include the ability to tell the CMM to initiate a gage reading, tell the CMM to go to sleep, etc. By default, the command functionality is enabled in the CMM. This command functionality can be disabled by using the MobileCollect Setup Program. If the command functionality is disabled, the CMM will function the same as a DMM.

[Contact MicroRidge](#) to learn more about the Command Mobile Module and to determine if it is appropriate for your application.

6 Purchase Orders

The summary printed by the MobileCollect Selection Tool **cannot** be submitted as a purchase order to MicroRidge Systems. Purchase orders must contain complete information such as billing address, shipping address, payment method, etc. However, you can submit a standard company purchase order and use the printed summary as an attachment to this purchase order.

7 Warranty Information

The standard MicroRidge warranty for products it manufactures and resells is described below:

- MicroRidge warrants that equipment manufactured by MicroRidge to be free from defects in material and workmanship, when properly maintained under normal use, for a period of twelve (12) months from date of purchase of the product (the “warranty period”). Some products sold and distributed by MicroRidge are warranted by the manufacturer of the products.
- Warranty for gage and RS-232 interface cables is 30 days from date of shipment.
- Products which do not conform to their description or which are defective in material or workmanship will, by MicroRidge decision, be replaced or repaired, or, at MicroRidge’s option, credit for the original purchase price may be allowed provided that customer notifies MicroRidge in writing of such defect within thirty (30) days of discovery and returns such products in accordance with the MicroRidge instructions. No products may be returned without MicroRidge prior written authorization.
- This warranty does not apply to any product which has been subjected to misuse, abuse, negligence or accident by the customer.
- MicroRidge makes no other warranty or representation of any kind with respect to the products, either express or implied, including without limitation, that of merchantability or fitness for a particular use. Failure to make any claim in writing, or within the thirty (30) day period set forth above, shall constitute an irrevocable acceptance of the products and an admission by the customer that the products fully comply with all terms, conditions and specifications of customer’s purchase order. MicroRidge shall not be liable for direct, indirect, incidental, special or consequential damages, under any circumstances, including, but not limited to, damage or loss resulting from inability to use the products, increased operating costs or loss of sales, or any other damages. To make a claim under this warranty, customer must notify MicroRidge in writing within the warranty period.
- Customer will pay all shipping charges (and duty and taxes) for equipment returned to MicroRidge for warranty service. MicroRidge will pay shipping charges for equipment returned to customer in North America. Customers outside the USA are responsible for duty and taxes on equipment returned to them.
- Software developed by MicroRidge is warranted to operate in accordance with the software documentation on the hardware specified in such documentation, for a period of six (6) months from date of shipment. During the warranty period, MicroRidge will at no charge correct any programming error in the software that interferes with normal operation of the software provided that MicroRidge is able to reproduce such error on MicroRidge computer.

8 Contact MicroRidge

Email:

Support: support@microridge.com

Sales: sales@microridge.com

Information: info@microridge.com

Phone:

Main office: 541-593-1656

Support: 541.593.1656

Sales: 541.593.3500

Fax: 541.593.5652

Mailing Address:

MicroRidge Systems, Inc.

PO Box 3249

Sunriver, OR 97707-0249

Shipping Address:

MicroRidge Systems, Inc.

56888 Enterprise Drive

Sunriver, OR 97707

Note: There is no mail delivery to this address. This address should only be used for package delivery services such as UPS, FedEx, etc.

Web: www.microridge.com