

# WedgeLink Xpress

Create & Save Configuration

Chapter 3

Dec 2018

*MobileCollect Wireless*

**MICRO**RIDGE

*Measurement Collection Specialists  
Connect Any Gage into Any Software*

# Overview

- Once the WedgeLink Xpress program is sending data in the proper format, the setup can be saved
- A new WedgeLink Xpress desktop icon will be created to simplify accessing your saved configuration
- Your setup will be automatically available anytime the program is opened using your icon

***MobileCollect Wireless***

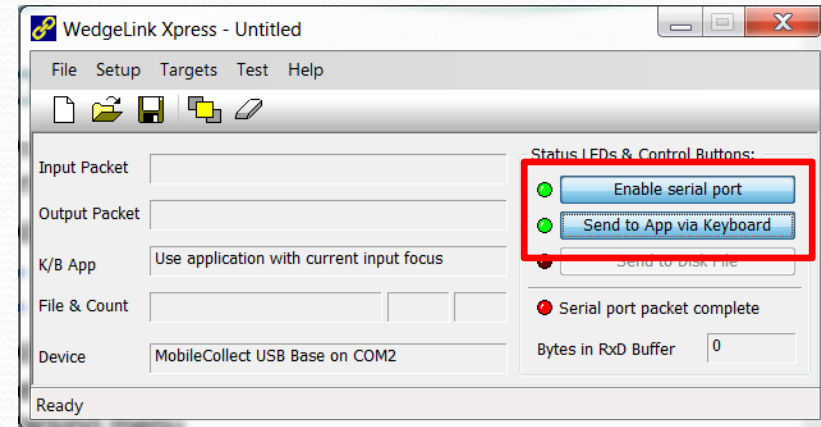
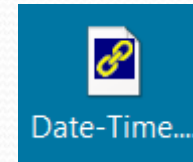
---

**MICRORIDGE**

*Measurement Collection Specialists  
Connect Any Gage into Any Software*

# Solution

- WedgeLink Xpress icon placed on the desktop
- Will automatically activate
  - Enable Serial Port
  - Send to App via Keyboard
- Will automatically use any selections saved in the Parsing menu



**MobileCollect Wireless**

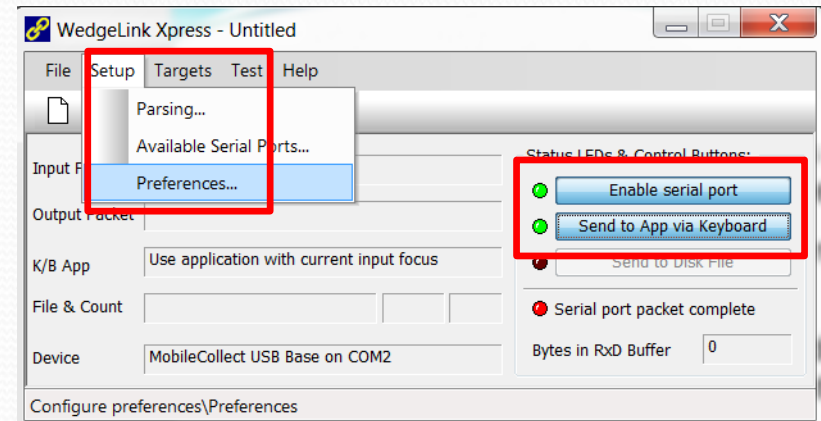
**MICRO RIDGE**

**Measurement Collection Specialists  
Connect Any Gage into Any Software**



# Step 1

- Automatically activates
  - Enable Serial Port
  - Send to App via Keyboard
- Both features must have green LEDs before starting
- Go to the Setup Menu
  - Select “**Preferences**”



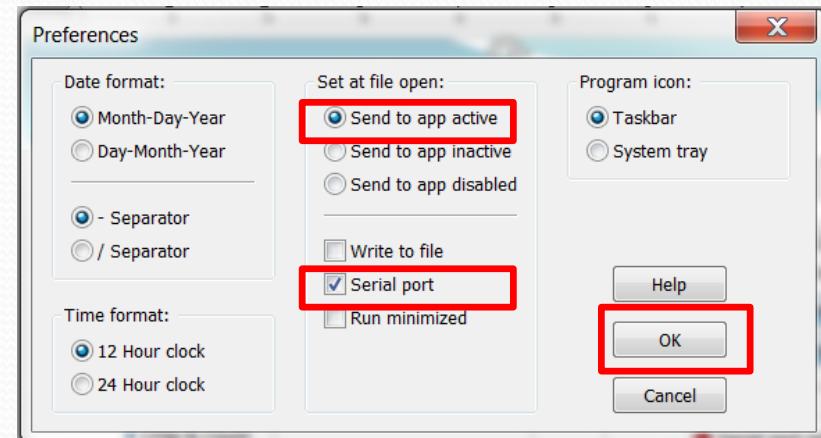
*MobileCollect Wireless*

**MICRO**RIDGE

*Measurement Collection Specialists  
Connect Any Gage into Any Software*

# Step 2

- Select two options
  - Send to app active
  - Serial port
- Click “OK” button



*MobileCollect Wireless*

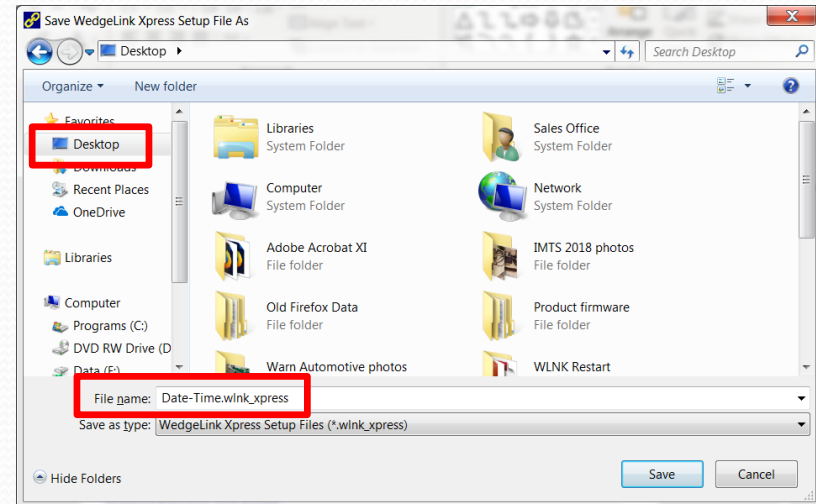
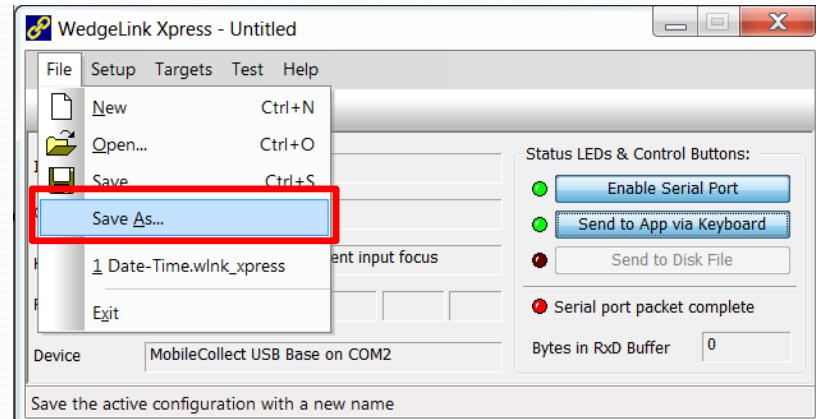
**MICRO**RIDGE

*Measurement Collection Specialists  
Connect Any Gage into Any Software*



# Step 3

- Save File
  - Open File menu
  - Select “Save As”
  - Select “Desktop”
  - Enter filename
  - Click on “Save” button



**MobileCollect Wireless**

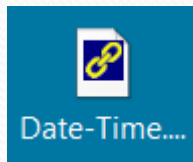
**MICRO RIDGE**

**Measurement Collection Specialists  
Connect Any Gage into Any Software**

# Desktop Icon

## Completed

- If your desktop icon includes the WedgeLink logo, your computer has established the link between the icon and the program .exe file



## Not Completed

- If your desktop icon is white, you will need to manually establish the link between the icon and the program
- See the following slides for this process.

***MobileCollect Wireless***

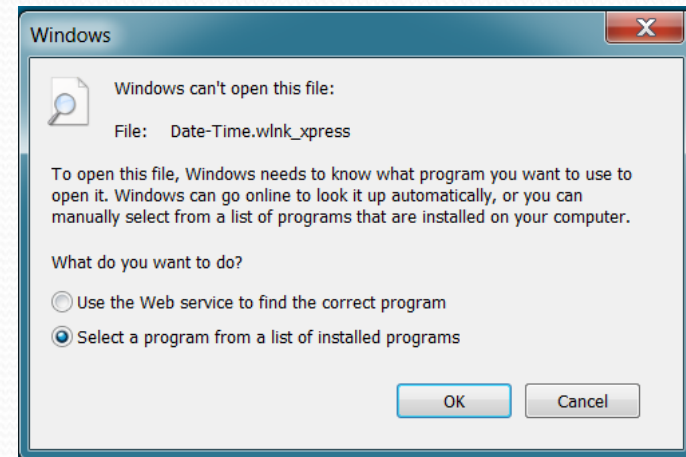
**MICRORIDGE**

*Measurement Collection Specialists  
Connect Any Gage into Any Software*



# White Icon

- Click on icon, you will see this message
  - Click on the “Select a program from a list of installed programs



*MobileCollect Wireless*

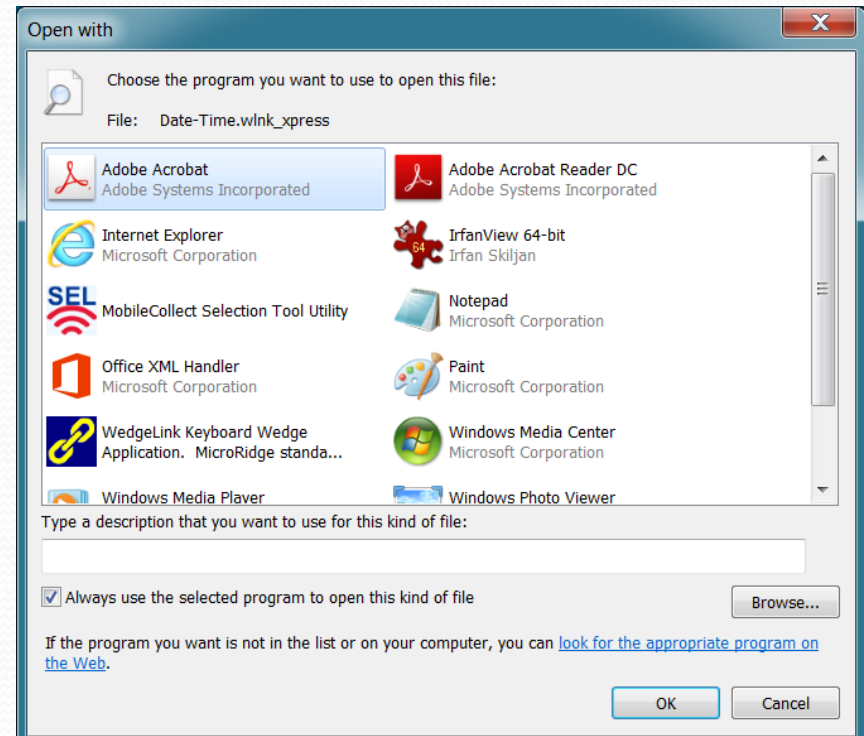
**MICRO RIDGE**

*Measurement Collection Specialists  
Connect Any Gage into Any Software*



# Find Program

- This window will appear, click on the “Browse” button
- Use the scroll bar to find the option to search your computer
  - Different text depending on your Windows version



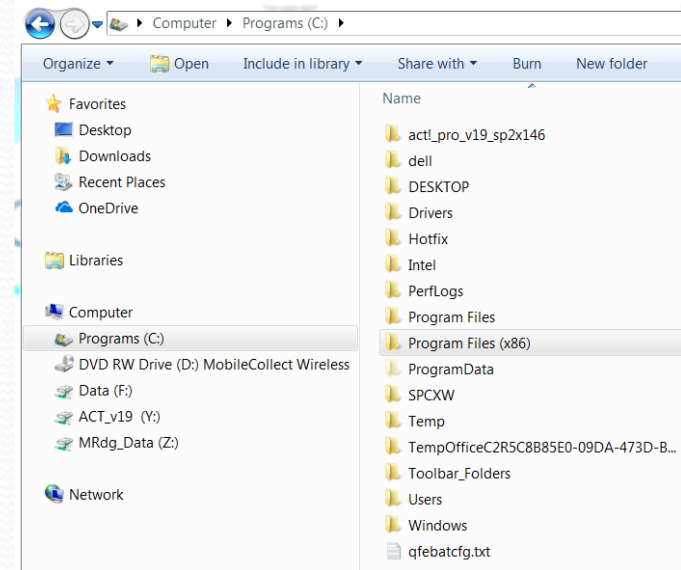
**MobileCollect Wireless**

**MICRORIDGE**

**Measurement Collection Specialists  
Connect Any Gage into Any Software**

# Create Link

- Go to the Programs (C:) drive on your computer
  - Open “Program Files (x86)”
  - Open “MicroRidge Systems”
  - Open “WedgeLink Xpress”
    - Double-click on the “WedgeLink\_Xpress.exe” file



**MobileCollect Wireless**

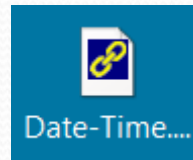
**MICRORIDGE**

**Measurement Collection Specialists  
Connect Any Gage into Any Software**



# Finished

- The WedgeLink Xpress program will open with the program activated and any selected parsing
- The icon will change to show the WedgeLink logo
  - Use your icon to open the program for future usage



*MobileCollect Wireless*

**MICRO RIDGE**

*Measurement Collection Specialists  
Connect Any Gage into Any Software*

# Need Support?

- Contact MicroRidge Technical Support for assistance with this WedgeLink Xpress feature
- Company information
  - Office Hours: Mon-Fri, 8am-4:30p Pacific
  - Office Phone: 541-593-1656
  - Email: [support@microridge.com](mailto:support@microridge.com)

***MobileCollect Wireless***

**MICRORIDGE**

***Measurement Collection Specialists  
Connect Any Gage into Any Software***