

# **MobileCollect<sup>TM</sup>**

## **Quick Start**

---

# **User's Guide**

# 1 Quick Start

Want to quickly get started using MobileCollect? The steps shown below should get you moving in the proper direction. In addition to following these Quick Start procedures, be sure to review all of the sections in the MobileCollect User's Guides. The following procedures assume you have purchased a Base and one or more Mobile Modules.

The software that will be used in this Quick Start include:

Xpress Setup Program	Easy to use Setup Program that meets the requirements for most users. If you need features that are not available in Xpress Setup, take a look at the Extended Setup Program.
ComTestSerial	Serial Communications Test Program that is installed with Xpress Setup and Extended Setup. This program makes it easy to see the data that is being sent from a Base to your PC.
WedgeLink Xpress	For those people that want to transfer their measurement information directly to Excel. WedgeLink Xpress is a keyboard wedge software utility that can send data to any application that accepts keyboard input.

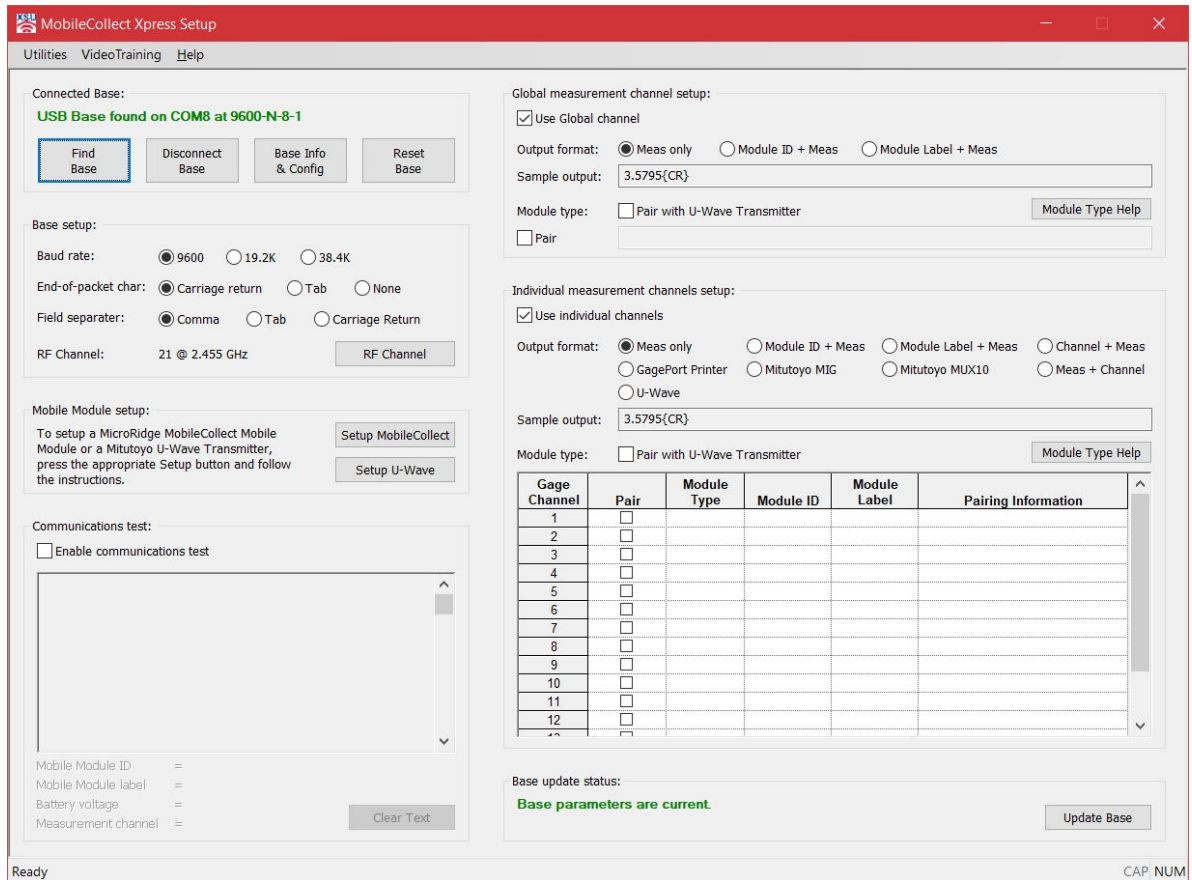
## Connecting USB & RS-232 Bases

- If you are using an RS-232 Base, do the following:
  - Connect the AC adapter to the Base and plug it into a 120 VAC source.
  - If you are connecting the RS-232 Base to a 9-pin serial port on your PC, connect the Base to the PC with the cable provided.
  - If you are connecting the RS-232 Base to a serial to USB cable purchased with MobileCollect, install the USB drivers from the Product Resources DVD before connecting the serial to USB cable to your PC.
- If you are using a USB Base, Wedge Base or USB MicroBase, do the following:
  - Install the USB drivers from the Product Resources DVD before connecting the USB Base or USB MicroBase to your PC.
  - Connect the USB Base, Wedge Base or USB MicroBase to your PC.

## 1.1 Xpress Setup

Xpress Setup is an easy to use Setup Program that meets the requirements for most users. If you need features that are not available in Xpress Setup, take a look at the Extended Setup Program. To get started with Xpress Setup, follow the steps below.

- Install the MobileCollect Xpress Setup Program included on the Product Resources DVD.
- Start the Xpress Setup Program. A shortcut was installed on your desktop during installation.



- Press the “Find Base” button. The Setup Program will search the available serial ports for the Base. If the Base is found, information from the Base will be displayed.
- Pair a Mobile Module with the Base.
  - Click the Pair check box in the "Global measurement channel setup" section located in the upper right-hand portion of the window.
  - Put the Mobile Module into the Setup Mode.
    - ✓ Press & hold the Setup button. The Setup button is the button closest to the gage cable.
    - ✓ While you continue to press the Setup button, press and release the Read button.
    - ✓ Once both LEDs start to flash, release the Setup button.
    - ✓ When the Setup Mode is active, both LEDs will flash rapidly. The left LED is red (●) and the right LED is green (●).
  - Press and release the Setup Button on the Mobile Module. The text box to the right of the Pair check box should display a message like the following.

Mobile Module ID B2413B (Label = B2413B) has been associated on RF channel 21

- When a Mobile Module is Paired with a Base, the Mobile Module receives the wireless address information for the Base. When the Mobile Module transmits a data packet, only the Base that matches the address information will process the measurement packet.
- Be sure your gage is turned on and connected to the Mobile Module. If you are using an RS-232 Mobile Module that is not connected to a Sylvac Proximity cable, you may have to set up the RS-232 Mobile Module for your RS-232 device. Refer to the Xpress Setup User's Guide for more information.
- Click on the "Enable communications test" check box so that you can view data being sent from the Mobile Module. Press the read button on the Mobile Module. If you are using a Mitutoyo caliper, you can also press the Data button on the gage cable.

Communications test:

Enable communications test

```
1.1655{CR}
1.2245{CR}
1.2680{CR}
```

Mobile Module ID = B2413B  
 Mobile Module label = B2413B  
 Battery voltage = 2.63 (New battery)  
 Measurement channel = Global

Clear Text

- Now let's change the format of the output from the Base. Select the "Module ID + Meas" radio button in the "Global measurement channel setup" section. Since you have made a change to the Base configuration you will need to press the "Update Base" in the lower right-hand corner of the window.

Global measurement channel setup:

Use Global channel

Output format:  Meas only  Module ID + Meas  Module Label + Meas

Sample output:  (this format requires MobileCollect or gages with RM2.4 Radios)

Module type:  Pair with U-Wave Transmitter

Pair

- Click on the "Enable communications test" check box and take some more gage readings.
- To configure a Mobile Module click the "Setup Module" button and follow the instructions in the dialog

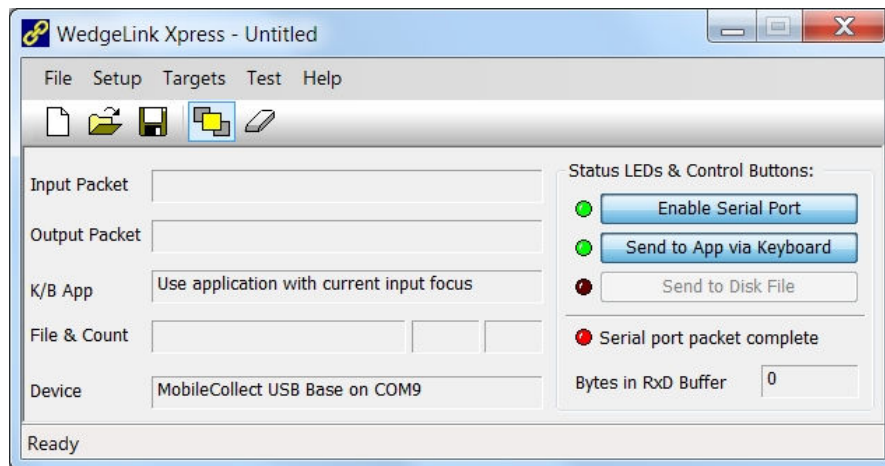
- To access ComTestSerial, select the "Utilities/ComTestSerial Communications Test Program" menu item. ComTestSerial allows you to view data coming from the Base and to send commands to the Base.
- The Help menu gives you access to Help files and the MobileCollect User's Guides (PDF documents).

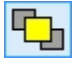
## 1.2 WedgeLink Xpress

If you want to send you measurements to Excel or another application that accepts keyboard input, you can use WedgeLink Xpress. WedgeLink Xpress is a software keyboard wedge that receives data via a serial port and transfers that data via keyboard input to the target application.

WedgeLink Xpress is provided at no charge with MobileCollect and will only work with MobileCollect Bases. Follow the steps below to give WedgeLink Xpress a try.

- Install the WedgeLink Xpress included on the Product Resources DVD.
- Start the WedgeLink Xpress Program. A shortcut was installed on your desktop during installation.



- Be sure your MobileCollect Base is connected to your PC.
- Be sure to close all applications that may have control of the serial port the Base is connected to.
- Click the "Enable Serial Port" button and WedgeLink Xpress will search for the connected Base. If a Base is found, the LED next to the "Enable Serial Port" button will turn from red to green.
- It is often useful to keep WedgeLink Xpress as a top Window. To keep WedgeLink Xpress on top, click on the  toolbar button.
- Open the application you want to send the data to. You can use applications such as Excel, Notepad, etc.
- Click the WedgeLink "Send to App via Keyboard" button. The LED to the left of this button should turn from red to green.
- Click on the location in your application where you want the data packet to be sent..
- Send a measurement from the Mobile Module by pressing the Read button on the Mobile Module. The measurement should appear in your target application.
- WedgeLink Xpress contains parsing functions such as changing commas to tabs, adding date and time stamps, etc. The parsing functions are accessed from the Setup menu.

- You can also send data to a specific application and write the data to a file. Review the Help topics for more information.