

WedgeLink SPTM

RS-232 Hardware Wedge

User's Guide

MICRORIDGE

*Measurement Collection Specialists
Connect Any Gage into Any Software*

WedgeLink SP Hardware Wedge

Copyright © 2011-2020 MicroRidge Systems, Inc.

All rights reserved. No parts of this work may be reproduced in any form or by any means - graphic, electronic, or mechanical, including photocopying, recording, taping, or information storage and retrieval systems - without the written permission of the publisher.

Products that are referred to in this document may be either trademarks and/or registered trademarks of the respective owners. The publisher and the author make no claim to these trademarks.

While every precaution has been taken in the preparation of this document, the publisher and the author assume no responsibility for errors or omissions, or for damages resulting from the use of information contained in this document or from the use of programs and source code that may accompany it. In no event shall the publisher and the author be liable for any loss of profit or any other commercial damage caused or alleged to have been caused directly or indirectly by this document.

Created: Monday, November 09, 2020 at 10:23 AM in Sunriver, Oregon.

Table of Contents

| | |
|--|----------|
| Chapter 1 Introduction..... | 1 |
| Chapter 2 Using WedgeLink SP..... | 3 |
| Chapter 3 ComTestSerial..... | 4 |
| Chapter 4 Warranty Information..... | 6 |
| Chapter 5 Contact MicroRidge..... | 7 |

1 Introduction



WedgeLink SP is a hardware keyboard wedge that allows you to transfer RS-232 data into any application that supports keyboard input. WedgeLink SP looks like a standard HID (human interface device) peripheral to a PC. Other HID peripherals that we are all familiar with are the USB keyboard and mouse. Since WedgeLink SP looks like a standard HID peripheral to your PC, you do not need to install any drivers for this wedge. WedgeLink SP is simple to use and does not require any configuration steps by the user.

Keyboard wedges are often used with applications such as Excel, Access and other database applications. The information sent from WedgeLink SP looks like data entered from the keyboard attached to your PC.

Features

The key features of WedgeLink SP are as follows:

- Compact size: 1.76" x 1.24" x .63 ".
- No driver installation required; product looks like a standard HID peripheral.
- Includes 6' USB cable.
- Sends all supported characters received from the attached serial device directly to your PC. Input packets from the serial device do not have to be terminated with a carriage return or a line feed character.

Available WedgeLink SP Models

There are 3 different WedgeLink SP models available. Each model is pre-configured to operate with a specific baud rate and communication parameters. These RS-232 settings cannot be changed by the user. [Contact us](#) if you need a version of WedgeLink SP that uses a different baud rate or communication parameters.

| | |
|-------------|---|
| 9600-N-8-1 | Supports all serial devices with 9600-N-8-1 or 9600-N-8-2 baud rate and communication parameters. This includes the GageWay Interfaces and MobileCollect Wireless manufactured by MicroRidge systems. |
| 19.2K-N-8-1 | Supports all serial devices with 19.2K-N-8-1 or 19.2K-N-8-2 baud rate and communication parameters. |
| 4800-E-7-S | Supports all serial devices with 4800-E-7-1 or 4800-E-7-2 baud and communication parameters. This model supports gages with the Simplex Opto or Proximity interfaces. The Simplex Opto and Proximity interfaces are found on many handheld gages (calipers, Micrometers, etc.) manufactured by Brown & Sharpe, Fowler, Mahr Federal, Starrett, Sylvac, etc. |

Supported Characters & Data Output

WedgeLink SP supports the standard ASCII characters found on North America keyboards. When a supported character is received by WedgeLink SP, the character will be sent directly to the PC. If WedgeLink SP receives an unsupported character, the unsupported character will be discarded.

The characters supported by WedgeLink SP include the following:

- Human readable characters found on the standard keyboard. This included ASCII characters from ASCII 32 to ASCII 126 (space, a to z, A to Z, 0 to 9, #, &, etc.).
- Control characters (less than ASCII 32) backspace, carriage return, escape and tab.

The characters not supported by WedgeLink SP include the following:

- Extended ASCII characters greater than ASCII 126.
- Control characters (less than ASCII 32) not mentioned above.
- Function keys such as F1, F2, etc.

2 Using WedgeLink SP

WedgeLink SP requires no configuration before you start to use the wedge. When you plug WedgeLink SP into a USB port on your PC, the PC will automatically install the necessary drivers within a few seconds. You may or may not hear a beep from your PC when WedgeLink SP is ready to use. Remember, the baud rate and communication parameters of your serial device must match the baud rate and communication parameters of WedgeLink SP.

You cannot change the baud rate or communication parameters in WedgeLink SP. Also, you cannot send commands from WedgeLink SP to your serial device. If you need to specify the baud rate, communication parameters or send a command to your serial device, you should take a look at the WedgeLink HW keyboard wedge and WedgeLink Standard software wedge. These wedges are also manufactured by MicroRidge Systems and allow the user numerous configuration options. Refer to the [Keyboard Wedges Overview](#) page on the [MicroRidge web site](#)

Caution! When WedgeLink SP is connected to a PC and you send data from the serial device connected to WedgeLink SP, data will be sent to the application on your PC that currently has the focus. Be sure you have the focus set to where you want the data to be sent. Remember, WedgeLink SP looks like just another keyboard to your PC.

Displaying Copyright Information

WedgeLink SP can send copyright and configuration information to your PC. In order to send this information, you must connect one end of a female to female null modem cable (not supplied with WedgeLink SP) to WedgeLink SP and the other end to a serial port on your PC. WedgeLink SP must also be connected to a USB port on your PC. You would then use [ComTestSerial](#) to send the necessary commands to WedgeLink SP. Normally there is no need for you to obtain the copyright and configuration information from a WedgeLink SP unit.

A sample output for the copyright and configuration information is shown below.

```
WedgeLink 9600 Keyboard Wedge for RS-232 Devices.  
Supports serial devices with the parameters shown below.
```

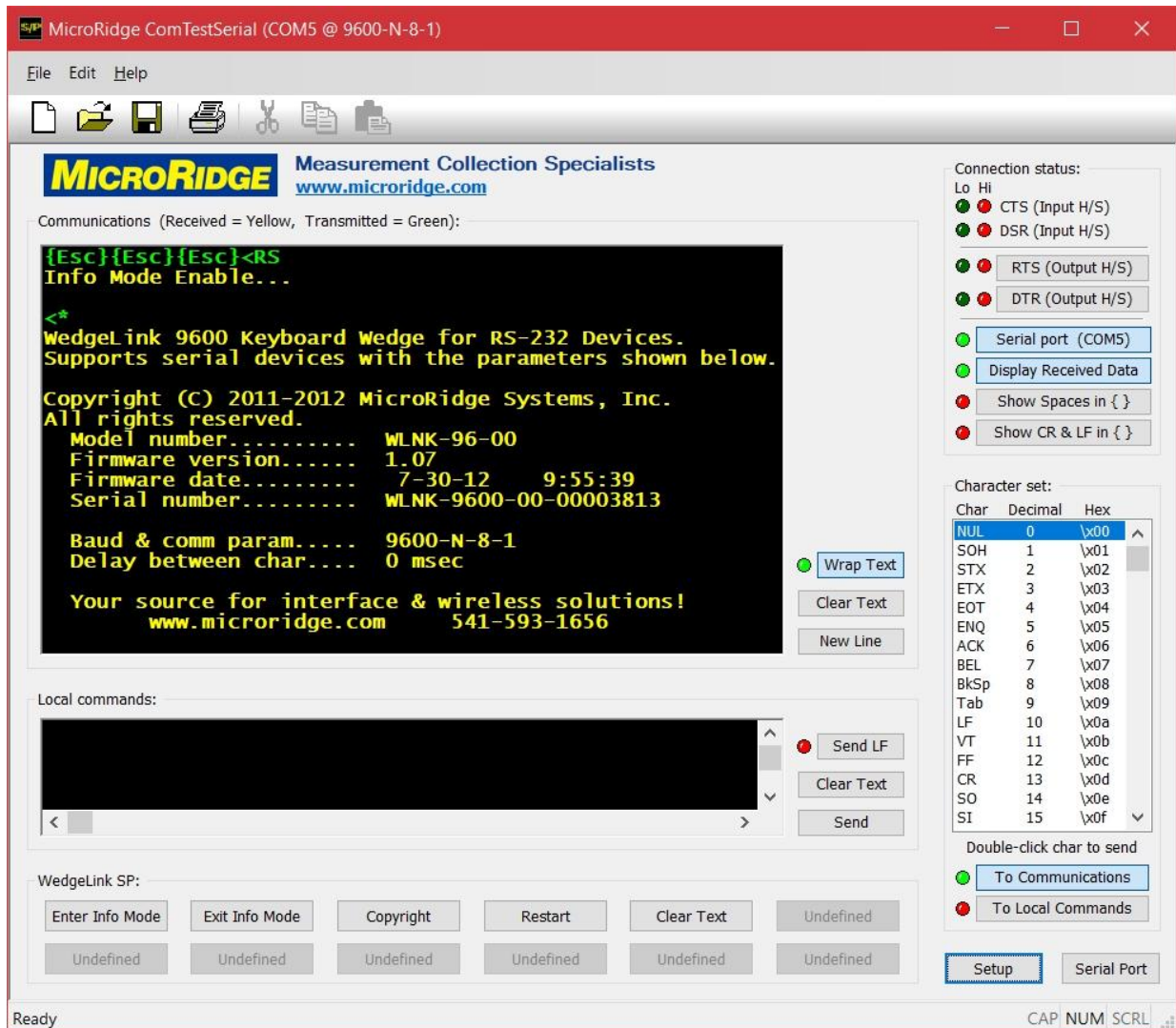
```
Copyright (C) 2011-2012 MicroRidge Systems, Inc.  
All rights reserved.
```

```
Model number..... WLNK-96-00  
Firmware version..... 1.07  
Firmware date..... 7-30-12 9:55:39  
Serial number..... WLNK-9600-00-00003813
```

```
Baud & comm param..... 9600-N-8-1  
Delay between char.... 0 msec
```

```
Your source for interface & wireless solutions!  
www.microridge.com 541-593-1656
```

3 ComTestSerial



ComTestSerial, a serial communications test program is included on the WedgeLink SP CD. It is unlikely that you will need to use ComTestSerial to retrieve the copyright and configuration information from WedgeLink SP. ComTestSerial was included primarily so that you can test and verify the output coming from your serial device.

Verifying the Output from a Serial Device

To verify the output from a serial device follow the steps listed below.

- Connect your serial device to a serial port on your PC.
- Run the ComTestSerial communications test program.

- Press the Serial Port button on ComTestSerial and select the appropriate COM port, baud rate and communication parameters. The baud rate and communication parameters selected must match the current setting in your serial device.
- Press the send button on your serial device.
- If the information displayed by ComTestSerial looks like garbage (unreadable information), you have selected the wrong baud rate and/or communication parameters.
- If no information is displayed by ComTestSerial, your serial device may not have sent any information or you may have select the wrong serial port in ComTestSerial.

4 Warranty Information

The standard MicroRidge warranty for products it manufactures and resells is described below:

- MicroRidge warrants that equipment manufactured by MicroRidge to be free from defects in material and workmanship, when properly maintained under normal use, for a period of twelve (12) months from date of purchase of the product (the “warranty period”). Some products sold and distributed by MicroRidge are warranted by the manufacturer of the products.
- Warranty for gage and RS-232 interface cables is 30 days from date of shipment.
- Products which do not conform to their description or which are defective in material or workmanship will, by MicroRidge decision, be replaced or repaired, or, at MicroRidge’s option, credit for the original purchase price may be allowed provided that customer notifies MicroRidge in writing of such defect within thirty (30) days of discovery and returns such products in accordance with the MicroRidge instructions. No products may be returned without MicroRidge prior written authorization.
- This warranty does not apply to any product which has been subjected to misuse, abuse, negligence or accident by the customer.
- MicroRidge makes no other warranty or representation of any kind with respect to the products, either express or implied, including without limitation, that of merchantability or fitness for a particular use. Failure to make any claim in writing, or within the thirty (30) day period set forth above, shall constitute an irrevocable acceptance of the products and an admission by the customer that the products fully comply with all terms, conditions and specifications of customer’s purchase order. MicroRidge shall not be liable for direct, indirect, incidental, special or consequential damages, under any circumstances, including, but not limited to, damage or loss resulting from inability to use the products, increased operating costs or loss of sales, or any other damages. To make a claim under this warranty, customer must notify MicroRidge in writing within the warranty period.
- Customer will pay all shipping charges (and duty and taxes) for equipment returned to MicroRidge for warranty service. MicroRidge will pay shipping charges for equipment returned to customer in North America. Customers outside the USA are responsible for duty and taxes on equipment returned to them.
- Software developed by MicroRidge is warranted to operate in accordance with the software documentation on the hardware specified in such documentation, for a period of six (6) months from date of shipment. During the warranty period, MicroRidge will at no charge correct any programming error in the software that interferes with normal operation of the software provided that MicroRidge is able to reproduce such error on MicroRidge computer.

5 Contact MicroRidge

Email:

Support: support@microridge.com
Sales: sales@microridge.com
Information: info@microridge.com

Phone:

Support: 541.593.1656
Sales: 541.593.3500
Main office: 541.593.1656
Fax: 541.593.5652

Mailing Address:

MicroRidge Systems, Inc.
PO Box 3249
Sunriver, OR 97707-0249

Shipping Address:

MicroRidge Systems, Inc.
56888 Enterprise Drive #3249
Sunriver, OR 97707

Note: There is no mail delivery to this address. This address should only be used for package delivery services such as UPS, FedEx, etc.

Web: www.microridge.com